

HISTORY OF

Kansas Wing

Civil Air Patrol
Auxiliary of the United States Air Force

1 January 2020

- 31 December 2020



Prepared By

Lynn Brown, Lt Col, CAP
Wing Historian

Reviewed By

Roger Eaton, Col, CAP
Commander, Kansas Wing, CAP

REGION COMMANDER APPROVAL



HEADQUARTERS KANSAS WING
CIVIL AIR PATROL
UNITED STATES AIR FORCE AUXILIARY
3010 Arnold Ave.
Salina, KS 67401

8 April 2021

MEMORANDUM FOR THE RECORD

FROM: KSWG/CC

SUBJECT: Approval of KSWG Annual History for 2020

1. Please accept this memorandum as proof of my approval of the KSWG Annual History for 2020.
2. If I can provide any additional information, please do not hesitate to contact me. My email address and phone numbers can be accessed in eServices or from the National Directory.

A handwritten signature in black ink, appearing to read "Roger Eaton".

ROGER EATON, Colonel, CAP
Commander

INTRODUCTORY DOCUMENTS

TITLE PAGE
COMMANDER'S APPROVAL LETTER

INTRODUCTION OF UNIT STAFF

UNIT Commander	Roger Eaton	Colonel
Vice Commander	Neil Taylor	Lieutenant Colonel
Chief of Staff	Chris Snyder	Lieutenant Colonel
Operations	Doug Dutton	Lieutenant Colonel
Cadet Program	Doug Crockett	Lieutenant Colonel
AE	Aaron Diller	Major

SUMMARY NARRATIVE OF MAJOR ACTIVITIES

Chapter I OPERATIONS

Commanders Intent – Emergency Services

We will align our resources and training to support our predominate missions.

Strategic Direction – Emergency Services (desired state)

- High proficiency for Air Force Missions
- Aligned to support American Red Cross
- Expanded support of state agencies
- Expanded radio communications capabilities and proficiencies

Search and Rescue

Kansas Wing responded to three ELT reports during this period. No signal was located on two of them and on one the owner of the ELT aircraft shut the ELT off when he noticed the CAP aircraft circling overhead. The Wing also responded to a request to help locate a missing teen. Both air and ground sorties were launched to aid in the search. The missing teen was found by ground searchers.

Several SAREX's for training were carried out during 2020 to train new crews and enhance skills. COVID restrictions slowed SAR training and assets were being used for COVID responses. Individual and squadron-level training did occur, with one squadron offering Urban Detection of ELT's.

Wing communicators were very active all year with national and regional net communications drills. One relay took place through Alaska, which was recognized by Region communications. Airborne repeaters were routinely used on missions and Wing communicators advised of the mission times to hone skills using the new repeater.

Disaster Response

By far the most significant Disaster Relief activity was the Wing's response to the COVID 19 Pandemic. By March of 2020, Kansas Department of Emergency Management (KDEM) began tasking the Kansas Wing with various activities associated with the pandemic. Among the first was to intercept a shipment of test swabs from Oberlin, Kansas to the state laboratory in Topeka which had missed a shipping connection in North Platte, Nebraska. The swabs would have timed out before arriving at the lab, so a Kansas Wing aircraft flew to North Platte, retrieved the shipment with the help of a Nebraska State Trooper, and flew it to Topeka. Kansas Wing ground units and wing staff prepared a procedure for safe carriage of the shipment in CAP aircraft, and provided additional packing and cleaning supplies to the crew during a stop in Junction City. Subsequent air missions expedited ventilator kits and PPE to outstate locations along with some additional testing materials. CAP vans covered all parts of the state on similar missions, and Wing personnel assisted KDEM by helping man the emergency operations center and working in the Topeka warehouse. During all of this activity Wing personnel carried out their assignments fully observing pandemic health protocols and procedures.

In August, the wing provided three aircraft and air crews to assist the Iowa Wing with damage assessment from a severe derecho wind storm.

Homeland Security

No Homeland Security missions were assigned during this period.

Counterdrug Operations

No Counterdrug missions were assigned during this period.

Chapter II AEROSPACE EDUCATION

Commander's Intent – Aerospace Education

We have a treasure of aerospace education resources. To get the most value from those resources we will develop schedules, kits and activities that are aligned with the CAP AE curriculum.

Strategic Directoin – Aerospace (desired state)

- Compelling senior AE program
- Engrained knowledge of basic AE curriculum for cadets
- Expanded participation with external organizations

Internal Aerospace Education

Restrictions due to the COVID-19 pandemic have limited internal AE activities to local squadrons, when those squadrons wee allowed to meet. While dealing with difficult conditions, local AEO's have continued to provide lessons for their cadets and seniors. Assistant DAE for Internal AE, 1Lt Shaun McGee, is contributing to the task of building a database of AE lessons which can be tapped and added to by squadron AEO's to provide information and inspiration for their teaching and professional development. The KSWG winter encampment and associated AE activities, scheduled in December, were cancelled. We look forward to opportunities for the next encampment.

External Aerospace Education

The Kansas Wing activated its glider and trailer during this period and held several training sessions to qualify instructors and tow pilots. Although curtailed to some extent by COVID-19 restrictions, several tow pilots and instructors were either refreshed or qualified and the glider program is ready for cadets in 2021.

External encampments were cancelled in 2020 due to COVID-19, but will resume in 2021.

Chapter III CADET PROGRAMS

Commander's Intent – Cadet Programs

The cadet programs transform the lives of cadets through character and leadership development.

Strategic Direction – Cadet Programs

- Easily repeatable followership and leadership opportunities for cadets and Senior leaders of cadets
- Inspirational leadership culture
- Self-disciplined fitness culture
- Eager participation by Cadet Advisory Council

Cadet Programs

The strategic direction of the KSWG Cadet Program is “Transforming the lives of cadets through character and leadership development.

Since before the change of command in May, 2020, the pandemic was well-established and impacting daily life as well as cadet life in the Kansas Wing. In-person meetings were halted, and then brought back for a short time with limitations, only to return to the virtual meeting space for the remainder of the year. The pandemic hurt recruiting efforts and even impacted maintaining current cadet levels in the wing. Cadet Programs Officers throughout the wing have identified “virtual meeting burnout” as a major cause, as cadets are meeting online for school and other activities.

Cadet Activities

Cadet activities were planned and halted as we succumbed to the pandemic limitations. National Headquarters established a 45-day “go, no-go” window to determine if pandemic restrictions would or would not support any given activity. But cadet programs officers continued to do the heavy lifting in spite of the low chance that activity would occur. Cadet Programs Officers consulted with the Kansas Wing COVID Mobilization Team, as well as local health department personnel to develop ideas to successfully host an in-person overnight activity and protect cadets and staff from illness. Unfortunately the Kansas Wing never reached Phase 2 in 2020, which was required to have overnight activities. We did manage to hold a single in-person Training Leaders of Cadets Basic Course, hosted by the Emerald City Squadron in Wichita during the only short window during the pandemic when we could, while continuing to adhere to basic mask and distance requirements.

Drug Demand Reduction

N/A

APPENDIX I: Core Mission Data and Statistics *(Data in support of the Narrative)*

Operations

A summary table of Operations data for Kansas Wing is included at the end of this Appendix

Aerospace Education

Aerospace education details largely reside at the squadron level regarding courses and presentations. The Wing is preparing virtual presentations for use by all wing squadrons in their programs on subjects of common interests.

Internal Aerospace Education

Details on Internal Aerospace Education are contained in Squadron Histories.

External Aerospace Education

Although external activities were planned for 2020, the COVID-19 quarantines and protocols prevented them from being presented. As noted in the narrative, one basic leadership course was conducted in Wichita during a short window that opened for in-person activities.

Cadet Programs

Cadet program details are contained in the squadron histories. Many programs were curtailed because of COVID-19 protocols from the State Health Department and National Headquarters.

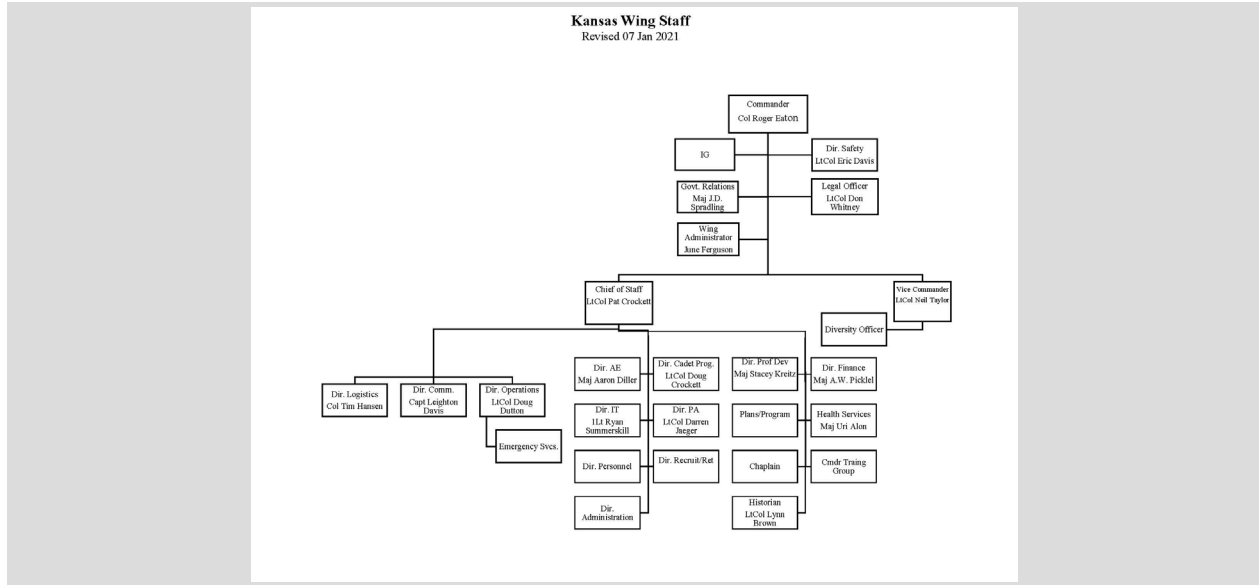
Calendar Year Ending 12/31/2020 WMIRS Report

Kansas Wing Operations Statistics CY 2020

<u>Sym</u>	<u>Type</u>	<u># Missions</u>	<u>Air</u>	<u>Ground</u>
A01	SAR Missing Person	1	3	3
A01	SAR ELTS	3	7	3
A05	Exercises	8	54	91
A06	College ROTC	2 Units	30	0
A07	Flight Evaluations	1	61	0
A08	JR ROTC	5 Units	24	0
A09	Maintenance	1	37	2
A12	Pilot Proficiency	1	102	0
A15	Cadet Orientation Flights	1	168	0
A50	Inspections	2	2	9
A96	Air Force Route Survey	1	4	0
A99	ASOS Support	1	16	0
B14	Covid Transport	146 Tasks	39	176
B14	EOC Support (3/14 - 5/31)	77 Days		114
C80	UAS Training	1		6
C99	ARC Missions	115 Msns		169
C Misc	Member Flights		72	
536	Hours Flown - Powered		662	573
88	Number of Glider Flights			
213	Senior Members			
119	Cadets			
230	ES Quals			
10	Squadrons			
5	Single Engine			
1	Gliders			
16	Vehicles			
2	Trailers			
12	Repeaters			
112	VHF/FM			
35	HF			

APPENDIX II: Unit Staff - Data and Statistics

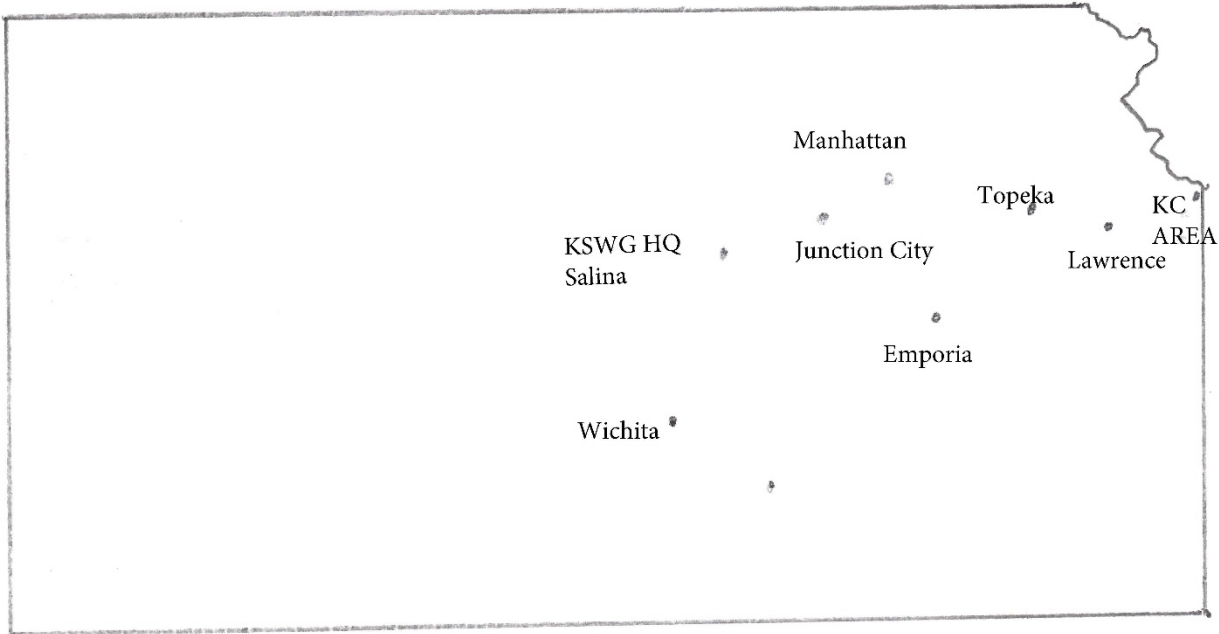
Unit Organization Chart



Unit Command and Staff Listing



KANSAS CITY AREA
New Century
Heartland
Kansas City, KS



Kansas Wing and Squadron Locations

APPENDIX III: Unit Staff - Data and Statistics

Logistics	Tim Hansen	Colonel
Communications	Leighton Davis	Captain
Professional Development	Stacey Kreitz	Major
Administration	Not Assigned	Select Rank
Personnel	Not Assigned	Select Rank
Recruiting and Retention	Not Assigned	Select Rank
Plans and Programs	Not Assigned	Select Rank
Public Affairs	Daren Jeager	Lieutenant Colonel
Information Technology	Ryan Summerskill	1st Lieutenant
Financial Statement	Jack Gonzenbach	Lieutenant Colonel
Chaplain	Not Assigned	Select Rank
Historian	Lynn Brown	Lieutenant Colonel
Health Services	Uri Alon, MD	Major
Inspector General	Not Assigned	Select Rank
Safety	Eric Davis	Lieutenant Colonel
Government Relations	J. D. Spradling	Major
Legal	Don Whitney	Lieutenant Colonel
		Select Rank
		Select Rank
		Select Rank
		Select Rank

APPENDIX III: Unit Data & Statistics

Logistics

Logistics data is attached at the end of this appendix.

Communications

Wing communications staff have supported and participated in the national and regional radio communications nets, and have gained recognition from Region for their participation and support. Wing and squadron staffs have become more proficient with the various combinations of fixed and airborne repeater functions necessary to the CAP mission. They have also gained skills in HF communications using fixed antenna sites and the CAP HF-equipped vans for a necessary backup in the case of widespread communications system interruption.

Professional Development

The Wing staff has encouraged more senior staff to enhance their professional development to higher levels of qualification. COVID-19 demands have included more interface and augmentation with state emergency management staff. An influx of more younger staff has also led to new opportunities for them to increase their skills and knowledge. The Wing Commander has also initiated an increased emphasis on more junior staff taking on the challenges of squadron commanders in several of the wing's squadrons.

Administration

Col. Roger Eaton relieved Col. Linette Lahan as Wing Commander in May of 2020. For other information regarding personnel and administration, see Administration commentary attached further down in this appendix.

Personnel

APPENDIX III: Unit Data & Statistics

Recruiting and Retention

The Kansas Wing currently does not have a Director of Recruiting and Retention. The COVID-19 pandemic severely restricted the Wing's ability to actively recruit, but efforts will be made to fill this position and improve recruiting and retention efforts in 2021. The Wing CC, CV, and Chief of Staff currently lead state recruiting efforts, leveraging National CAP marketing/recruiting efforts as frequently as possible (i.e. Social Media shares, emails, etc), and support the efforts of local squadrons to recruit within their communities.

Plans and Programs

Public Affairs

Situation reports were provided to the wing and relevant state agencies on the COVID-19 response. Several airmen were nominated for Public Affairs awards. A weekly newsletter, the Wingman, was launched. It provides Kansas airmen with current events within the wing.

Information Technology

Financial Statement

A financial statement for the Kansas Wing is attached at the end of this appendix.

Chaplain

Kansas Wing currently does not have a Wing level chaplain assigned and is actively seeking a qualified chaplain to fill the role. For 2020, the wing relied on squadron chaplains to provide spiritual care, moral leadership, and character development to squadrons with vacant chaplain positions as requested by squadron commanders.

APPENDIX III: Unit Data & Statistics (Continued)

Historian

The Wing Historian is a collateral duty of one of the squadron historians. His primary duty is to note and collect historical information from wing and squadron resources as the year progresses and to prepare the annual history for the wing. The Wing Commander regards this as the most important function in the wing.

Health Services

Health services is also a collateral duty of one of the squadrons medical staff. The primary function of the Health Services Officer is to advise Wing Commander and staff regarding health issues. In 2020 much of this activity centered around keeping the wing personnel as active as practical while observing national, state, local and CAPNHQ guidelines.

Administration

Kansas Wing currently does not have a Director of Personnel or a Director of Admin, as improvements to cloud based systems within CAP have made the functions of these positions limited, particularly in minimally manned wing staffs. The Wing CC, CV and/or the Chief of Staff cover any administrative or personnel actions that would normally be delegated to the Director of Personnel or Director of Administration.

Inspector General

No Inspector General has been assigned to the wing. The staff legal officer has historically handled the IG role in the past.

Safety

Safety officers at the squadron level are augmented by Stan/Eval personnel at both wing and squadron level. Most squadrons have a meeting dedicated to safety monthly, and safety standdowns were held to focus on safety as the squadrons and Kansas Wing begin to come out of more restrictive phases of COVID-19. Safety during the many airborne and van logistics run in support of state and Red Cross activities were emphasized, particularly regarding personal hygiene, PPE, and safety of the materials moved for the agencies.

APPENDIX III: Unit Data & Statistics (Continued)

Government Relations

During the COVID-19 Pandemic of 2020 the KSWG Civil Air Patrol Government Relations Adviser (GRA) has been adapting to keep the Wing's mission and objectives moving forward with preplanning and preparation for Legislative Day on the Hill in Washington, D.C. This effort has been very successful this year with the assistance of the CAP National Legislative Day team as well as the CAP North Region personnel. The KS999 Legislative Squadron Commander located in Topeka Kansas has planned, coordinated and met with our two Senators and four Congressional leaders and their staff. These activities have brought about CAPNHQ receipt of more funding and Kansas CAP having a closer governmental working relationship with its state and local representatives and several government agencies.

KANSAS WING, CIVIL AIR PATROL

3010 Arnold

Salina, KS 67401

Director of Logistics

CY 2020 Summary

- New LG appointed in May

- Warehouse
 - Cleaned
 - Excess/outdated items disposed of
 - Organized to be more user friendly

- ABU acquisitions from
 - 190th Air Guard, Topeka (serviceable)
 - AAFES Store, McConnell AFB (new)

- Vehicles assigned
 - 1-Comm Truck
 - 4-SUV's 4WD
 - 1-SUV 2WD
 - 7-Minivans
 - 3-Full size vans

- Trailers
 - 1-Glider trailer
 - 1-Cargo trailer

- Tires
 - Spread sheet created to track tire data
 - Units/individuals advised when tires reach are reaching six years of age

- Aircraft
 - 2-Cessna 172's
 - 3-Cessna 182's
 - 1-Glider



Vehicle Usage Annually

Total Vehicles: 16

01 Jan 2020 to 31 Dec 2020

Org.	Field ID	Admin Times Used	Admin Hours	Cdt Times Used	Cadet Act. Hours	Mission Support Hours Used	Mission Support Hours	Other Times Used	Other Hours	Total Times Used	Total Hours	Total Miles Driven	Year Manuf	Make	Model	Occ	Ann Time Goal	Ann Hour Goal	Ann Mile Goal
	NCR-KS-001 14003	6	17	2	6	8	158	10	33	26	214	1461	1990	Ford	Comm E350 1 Ton	2	12	180	1560
	14014	77	314	33	114	172	925	64	283	346	1636	15105	2007	Ford	F250 3/4 Ton	6	48	180	2400
	14002	1	2	3	9	12	71	36	102	52	184	4418	2014	Chevrolet	TRAVERS E	7	72	600	5700
	14008	17	87	4	7	18	137	17	57	56	288	7756	2010	Dodge	GRAND CARAVAN SE	7	72	600	5700
	NCR-KS-003 14011	1	1	16	46	26	459	17	129	54	613	4705	2010	Dodge	Caravan	7	72	600	5700
	NCR-KS-034 14013	42	176	4	19	30	279	8	36	84	510	7935	2019	Ford	Transit Connect	7	72	600	5700
	NCR-KS-035 14001	3	4	1	7	41	317	9	13	54	341	5445	2008	Ford	E350 1 Ton	11	48	420	4200
	NCR-KS-055 14018	5	25	25	79	3	33	0	0	33	137	1952	2007	Ford	E350 1 Ton	12	48	420	4200
	NCR-KS-061 14012	20	34	17	63	10	65	15	4	56	155	2838	2019	Ford	Transit Connect	7	72	600	5700
	NCR-KS-066 14022	46	179	35	258	251	827	12	80	344	1344	14867	2012	Ford	EXPEDITI ON	8	72	420	5400
	NCR-KS-077 14020	13	64	2	17	12	56	13	61	40	198	2805	2020	Ford	Transit 350	12	48	420	4200
	NCR-KS-092 14010	1	4	3	18	24	186	11	33	39	241	7757	2019	Ford	Transit Connect	7	72	600	5700
	14021	1	4	0	0	55	626	38	134	94	764	8211	2012	Ford	EXPEDITI ON	8	72	420	5400
	NCR-KS-123 14023	41	52	0	0	548	688	7	12	596	752	17646	2012	Dodge	GRAND CARAVAN SE	7	72	600	5700
	NCR-KS-125 14006	6	15	34	148	63	444	44	91	147	698	14699	2018	Dodge	Caravan	7	72	600	5700
	14025	11	24	32	148	80	659	37	82	160	913	18283	2009	Ford	Expedition	8	72	420	5400
Total		291	1002	211	939	1353	5930	338	1150	2181	8988	135883					996	7680	78360

Warning: The information you are receiving is protected from interception or disclosure. Any person who intentionally distributes, reproduces or discloses its contents is subject to the penalties set forth in 18 United States Code Section 2511 and/or related state and federal laws of the United States.



Vehicle Usage Averages **CY'20**

Total Vehicles: 16
01 Jan 2020 to 31 Dec 2020

Organization	Field ID	Average Times Used	Average Hours Used	Average Miles Used
NCR-KS-001	14002 CV	4	15	368
	14003 Comm Truck	2	17	121
	14008 CC	4	24	646
	14014 LG	28	136	1258
NCR-KS-003	14011	4	51	392
NCR-KS-034	14013	7	42	661
NCR-KS-035	14001	4	28	453
NCR-KS-055	14018	2	11	162
NCR-KS-061	14012	4	12	236
NCR-KS-066	14022	28	112	1238
NCR-KS-077	14020	6	33	467
NCR-KS-092	14010	3	20	646
	14021	7	63	684
NCR-KS-123	14023	49	62	1470
NCR-KS-125	14006	12	58	1224
	14025	13	76	1523

Warning: The information you are receiving is protected from interception or disclosure. Any person who intentionally distributes, reproduces or discloses its contents is subject to the penalties set forth in 18 United States Code Section 2511 and/or related state and federal laws of the United States.



ORMS - Aircraft Tail Number Report

Tail Number	Wing	Make	Year Mnf	Model	Serial Number	Acq Date	In Service
N426BA	KS	Blanik	2002	L23	029008	04 Apr 2013	05 Apr 2013
N524CP	KS	Cessna	2018	182T	18283031	18 Apr 2018	18 Apr 2018
N705CP	KS	Cessna	2005	182T	18281705	05 Jan 2006	04 Feb 2006
N98175	KS	Cessna	1985	172P	17276264	01 Jan 1987	30 Jun 1987
N996CP	KS	Cessna	1997	172R	17280321	08 Dec 1997	26 Jan 1998
N997CP	KS	Cessna	2007	182T	18281997	28 Dec 2007	02 Feb 2008

Warning: The information you are receiving is protected from interception or disclosure. Any person who intentionally distributes, reproduces or discloses its contents is subject to the penalties set forth in 18 United States Code Section 2511 and/or related state and federal laws of the United States.

Results as of: 26 Mar 2021

Page 1 of 1

Kansas Wing HQ, Civil Air Patrol
Balance Sheet
 As of December 31, 2020

	Dec 31, 20
ASSETS	
Current Assets	
Checking/Savings	
1016000 · Cash in Bank	
1016110 · Wing Checking--UMB Bank	
1016114 · Wing Checking--UMB Bank	51,717.19
1016115 · Cadet (Aye) Scholarship Fund	3,582.00
	55,299.19
1016180 · Cadet Activities--UMB Bank	24,957.18
1016300 · Unit Funds--UMB Bank	
1016304 · KS003-Konza Composite Sq	673.06
1016305 · KS034-Kansas City Composite	869.36
1016310 · KS035-Topeka Eagle Composite	2,003.48
1016315 · KS055-Heartland Cadet	6,610.42
1016320 · KS061-Lawrence Composite	2,451.53
1016325 · KS066-Flint Hills Composite	2,706.60
1016330 · KS077-77th Composite	7,033.10
1016335 · KS092-Smoky Hill Composite	1,696.93
1016340 · KS123-New Century Composite	11,042.89
1016345 · KS125-Emerald City Composite	2,017.42
	37,104.79
Total 1016300 · Unit Funds--UMB Bank	37,104.79
Total 1016000 · Cash in Bank	117,361.16
	117,361.16
Accounts Receivable	
1110000 · Accounts Receivables	
1120000 · Accounts Receivables	2,206.65
	2,206.65
Total 1110000 · Accounts Receivables	2,206.65
Total Accounts Receivable	2,206.65
Other Current Assets	
1499 · Undeposited Funds	143.00
	143.00
Total Other Current Assets	143.00
Total Current Assets	119,710.81
Fixed Assets	
1500000 · Fixed Assets	
1570000 · Fixed Assets - Other Equipment	8,500.00
1575000 · Accum Depr - Other Equipment	-8,500.00
	0.00
Total 1500000 · Fixed Assets	0.00
Total Fixed Assets	0.00
TOTAL ASSETS	119,710.81
LIABILITIES & EQUITY	
Liabilities	
Current Liabilities	
Accounts Payable	
2015000 · Accounts Payables	2,256.03
	2,256.03
Total Accounts Payable	2,256.03
Total Current Liabilities	2,256.03
Total Liabilities	2,256.03
Equity	
3000000 · Net Assets	
3005000 · Current Year Net Assets	
3015000 · Net Assets - Unrestricted	104,124.14

2:40 PM
03/22/21
Accrual Basis

Kansas Wing HQ, Civil Air Patrol
Balance Sheet
As of December 31, 2020

	<u>Dec 31, 20</u>
3025000 · Net Assets - Temp Restricted	<u>8,922.00</u>
Total 3005000 · Current Year Net Assets	<u>113,046.14</u>
Total 3000000 · Net Assets	113,046.14
Net Income	<u>4,408.64</u>
Total Equity	<u>117,454.78</u>
TOTAL LIABILITIES & EQUITY	<u><u>119,710.81</u></u>